



LABORATORY GROWN DIAMOND REPORT

LG490176627

GRADING SCALES

Table with 5 columns for Color Grading Scale (CL, NC, FT, VLT, LT) and Clarity (10x) Grading Scale (FL, IF, VVS, VS, SI, I).

The laboratory grown diamond described in this Report (Report) has been graded, tested, analyzed, examined and/or inscribed by International Gemological Institute (IGI). A laboratory grown diamond is one that has essentially the same chemical, physical and optical properties as a mined diamond...

© INTERNATIONAL GEMOLOGICAL INSTITUTE, INC.

08/25/2021

IGI Report Number LG490176627

Shape and Cutting Style OVAL BRILLIANT

Measurements 9.71 x 7.06 x 4.58 mm

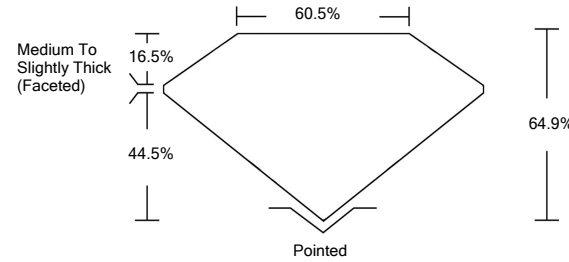
GRADING RESULTS

Carat Weight 2.02 CARATS

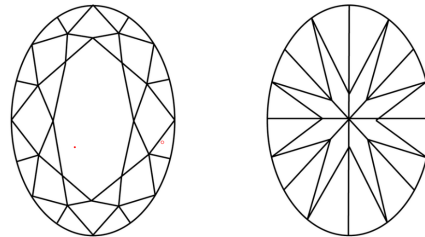
Color Grade G

Clarity Grade VS 1

PROPORTIONS



CLARITY CHARACTERISTICS



KEY TO SYMBOLS

Red symbols indicate internal characteristics. Green symbols indicate external characteristics.

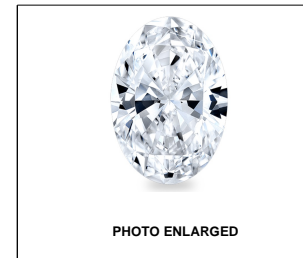
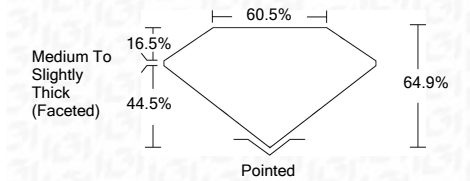


PHOTO ENLARGED



LASERSCRIBE SM



ADDITIONAL GRADING INFORMATION

Polish EXCELLENT

Symmetry EXCELLENT

Fluorescence NONE

Inscription(s) LABGROWN IGI LG490176627

Comments: This Laboratory Grown Diamond was created by Chemical Vapor Deposition (CVD) growth process and may include post-growth treatment. Type IIa

08/25/2021

IGI Report Number LG490176627

Shape and Cutting Style OVAL BRILLIANT

Measurements 9.71 x 7.06 x 4.58 mm

GRADING RESULTS

Carat Weight 2.02 CARATS

Color Grade G

Clarity Grade VS 1

ADDITIONAL GRADING INFORMATION

Polish EXCELLENT

Symmetry EXCELLENT

Fluorescence NONE

Inscription(s) LABGROWN IGI LG490176627

Comments: This Laboratory Grown Diamond was created by Chemical Vapor Deposition (CVD) growth process and may include post-growth treatment. Type IIa



IGI

08/25/2021 IGI Report No. LG490176627 OVAL BRILLIANT 9.71 x 7.06 x 4.58 mm 2.02 CARATS G VS 1 64.5% 60.5% Medium To Slightly Thick (Faceted) Pointed EXCELLENT EXCELLENT NONE LABGROWN IGI LG490176627

This Laboratory Grown Diamond was created by Chemical Vapor Deposition (CVD) growth process and may include post-growth treatment. Type IIa