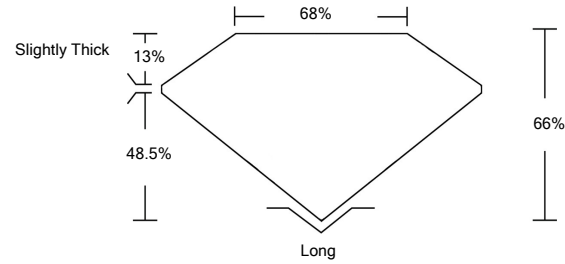




LG480149477

LABORATORY GROWN DIAMOND REPORT

PROPORTIONS

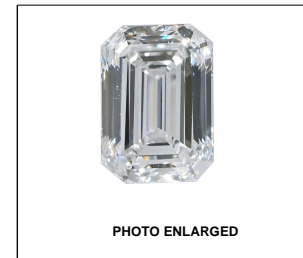


GRADING SCALES

Table with 5 columns for Color Grading Scale (CL to LT) and Clarity (10x) Grading Scale (FL to I).

The laboratory grown diamond described in this Report (Report) has been graded, tested, analyzed, examined and/or inscribed by International Gemological Institute (IGI). A laboratory grown diamond is one that has essentially the same chemical, physical and optical properties as a mined diamond...

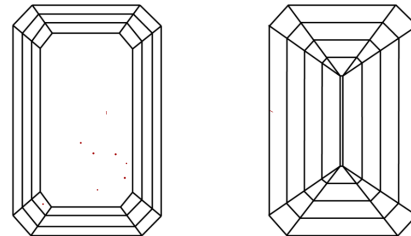
© INTERNATIONAL GEMOLOGICAL INSTITUTE, INC.



LABGROWN IGI LG480149477

LASERSCRIBESM

CLARITY CHARACTERISTICS



KEY TO SYMBOLS

Red symbols indicate internal characteristics. Green symbols indicate external characteristics.

06/15/2021 IGI Report Number LG480149477

Shape and Cutting Style EMERALD CUT

Measurements 7.60 x 5.47 x 3.61 mm

GRADING RESULTS

Carat Weight 1.50 CARAT

Color Grade E

Clarity Grade VS 2

ADDITIONAL GRADING INFORMATION

Polish EXCELLENT

Symmetry EXCELLENT

Fluorescence NONE

Inscription(s) LABGROWN IGI LG480149477

Comments: This Laboratory Grown Diamond was created by Chemical Vapor Deposition (CVD) growth process and may include post-growth treatment. Type IIa

06/15/2021 IGI Report Number LG480149477

Shape and Cutting Style EMERALD CUT

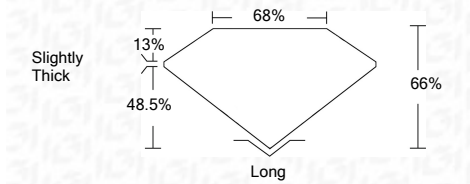
Measurements 7.60 x 5.47 x 3.61 mm

GRADING RESULTS

Carat Weight 1.50 CARAT

Color Grade E

Clarity Grade VS 2



ADDITIONAL GRADING INFORMATION

Polish EXCELLENT

Symmetry EXCELLENT

Fluorescence NONE

Inscription(s) LABGROWN IGI LG480149477

Comments: This Laboratory Grown Diamond was created by Chemical Vapor Deposition (CVD) growth process and may include post-growth treatment. Type IIa



IGI

06/15/2021 IGI Report No. LG480149477 EMERALD CUT 7.60 x 5.47 x 3.61 mm 1.50 CARAT E VS 2 68% 66% 13% 48.5% Slightly Thick Long EXCELLENT EXCELLENT NONE LABGROWN IGI LG480149477

This Laboratory Grown Diamond was created by Chemical Vapor Deposition (CVD) growth process and may include post-growth treatment. Type IIa