



LG472160681

LABORATORY GROWN DIAMOND REPORT

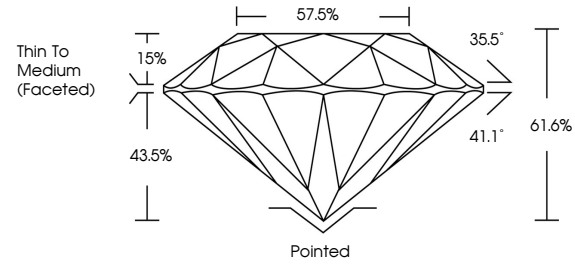
06/21/2021
IGI Report Number LG472160681
Shape and Cutting Style ROUND BRILLIANT
Measurements 7.43 - 7.49 x 4.59 mm

GRADING RESULTS
Carat Weight 1.55 CARAT
Color Grade G
Clarity Grade VS 2
Cut Grade IDEAL

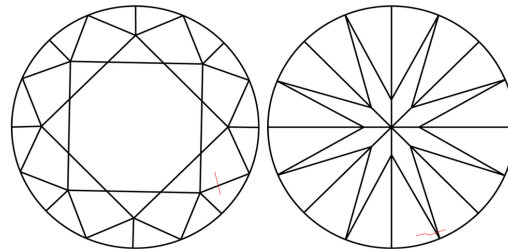
ADDITIONAL GRADING INFORMATION
Polish EXCELLENT
Symmetry EXCELLENT
Fluorescence NONE
Inscription(s) LABGROWN IGI LG472160681

Comments: This Laboratory Grown Diamond was created by Chemical Vapor Deposition (CVD) growth process and may include post-growth treatment Type IIa

PROPORTIONS



CLARITY CHARACTERISTICS



KEY TO SYMBOLS

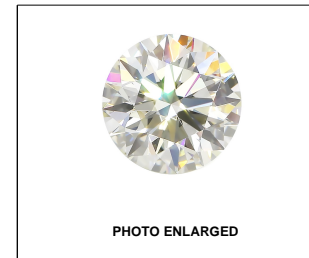
Red symbols indicate internal characteristics.
Green symbols indicate external characteristics.

GRADING SCALES

Table with 5 columns: CL (Colorless D-F), NC (Near Colorless G-J), FT (Faint K-M), VLT (Very Light N-R), LT (Light S-Z). Rows include Color Grading Scale and Clarity (10x) Grading Scale.

The laboratory grown diamond described in this Report (Report) has been graded, tested, analyzed, examined and/or inscribed by International Gemological Institute (IGI). A laboratory grown diamond is one that has essentially the same chemical, physical and optical properties as a mined diamond...

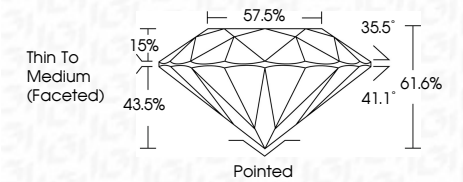
© INTERNATIONAL GEMOLOGICAL INSTITUTE, INC.



LABGROWN IGI LG472160681

LASERSCRIBE SM

06/21/2021
IGI Report Number LG472160681
Shape and Cutting Style ROUND BRILLIANT
Measurements 7.43 - 7.49 x 4.59 mm
GRADING RESULTS
Carat Weight 1.55 CARAT
Color Grade G
Clarity Grade VS 2
Cut Grade IDEAL



ADDITIONAL GRADING INFORMATION
Polish EXCELLENT
Symmetry EXCELLENT
Fluorescence NONE
Inscription(s) LABGROWN IGI LG472160681

Comments: This Laboratory Grown Diamond was created by Chemical Vapor Deposition (CVD) growth process and may include post-growth treatment Type IIa



IGI

06/21/2021
IGI Report No. LG472160681
ROUND BRILLIANT
7.43 - 7.49 x 4.59 mm
1.55 CARAT
G
VS 2
IDEAL
61.6%
57.5%
Thin To Medium (Faceted)
Pointed
EXCELLENT
EXCELLENT
NONE
LABGROWN IGI LG472160681
Comments: This Laboratory Grown Diamond was created by Chemical Vapor Deposition (CVD) growth process and may include post-growth treatment Type IIa