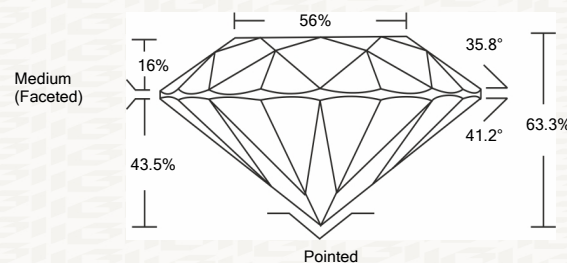




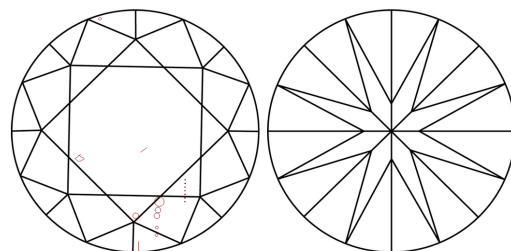
IGI GEMOLOGICAL REPORT

ADDITIONAL INFORMATION

PROPORTIONS



CLARITY CHARACTERISTICS



KEY TO SYMBOLS

Red symbols indicate internal characteristics. Green symbols indicate external characteristics.

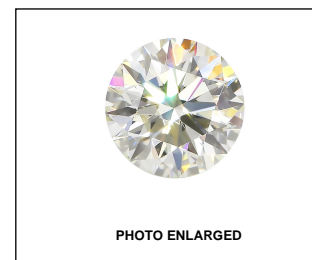
This Report is subject to the terms and conditions

© IGI 2000, edition 2019 all rights reserved.

GRADING SCALES

Table with 2 rows and 5 columns showing grading scales for Color (CL) and Clarity (CLARITY 10x).

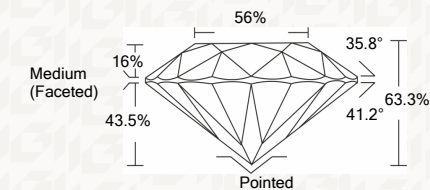
The laboratory grown diamond described in this Report (Report) has been graded, tested, analyzed, examined and/or inscribed by International Gemological Institute (I.G.I.).



THE DOCUMENT WAS PRODUCED THE FOLLOWING SECURITY MEASURES: SPECIAL DOCUMENT BACKGROUND DESIGNS HOLOGRAM AND OTHER SECURITY FEATURES NOT LISTED AND DO NOT VIOLATE TRADEMARK OR INDUSTRY DUBLINES

IGI LABORATORY GROWN DIAMOND GRADING REPORT

02/24/2020 IGI Report Number LG407945541 Shape and Cutting Style ROUND BRILLIANT Measurements 7.71 - 7.76 X 4.90 MM GRADING RESULTS Carat Weight 1.81 CARAT Color Grade I Clarity Grade SI 1 Cut Grade EXCELLENT



ADDITIONAL GRADING INFORMATION

Polish EXCELLENT Symmetry EXCELLENT Fluorescence NONE Inscription(s) LABGROWN IGI LG407945541

Comments: This Laboratory grown diamond was created by chemical vapor deposition process (CVD) Type IIa



IGI

02/24/2020 IGI Report No. LG407945541 ROUND BRILLIANT 7.71 - 7.76 X 4.90 MM Carat Weight 1.81 CARAT Color Grade I Clarity Grade SI 1 Cut Grade EXCELLENT Depth 63.3% Table 56% Girdle Medium (Faceted) Culet Pointed Polish EXCELLENT Symmetry EXCELLENT Fluorescence NONE Inscription(s) LABGROWN IGI LG407945541 Comments: This Laboratory grown diamond was created by chemical vapor deposition process (CVD) Type IIa

