



LG457073885

LABORATORY GROWN DIAMOND REPORT

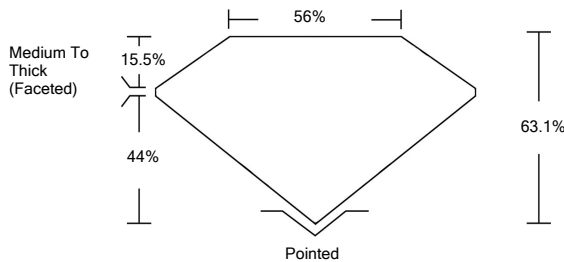
01/07/2021
IGI Report Number LG457073885
Shape and Cutting Style OVAL BRILLIANT
Measurements 9.28 x 6.42 x 4.05 mm
GRADING RESULTS
Carat Weight 1.55 CARAT
Color Grade F
Clarity Grade SI 1

ADDITIONAL GRADING INFORMATION
Polish EXCELLENT
Symmetry EXCELLENT
Fluorescence NONE
Inscription(s) LABGROWN IGI LG457073885

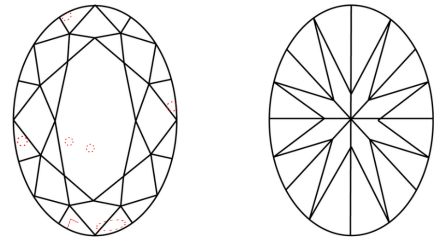
Comments: This Laboratory Grown Diamond was created by Chemical Vapor Deposition (CVD) growth process. Type IIa



PROPORTIONS



CLARITY CHARACTERISTICS

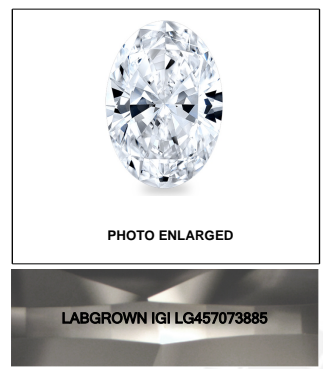


KEY TO SYMBOLS
Red symbols indicate internal characteristics.
Green symbols indicate external characteristics.

GRADING SCALES

Table with 5 columns for Color Grading Scale (CL, NC, FT, VLT, LT) and Clarity (10x) Grading Scale (FL, IF, VVS, VS, SI, I). Includes sub-labels like 'COLORLESS D-F', 'NEAR COLORLESS G-J', etc.

The laboratory grown diamond described in this Report (Report) has been graded, tested, analyzed, examined and/or inscribed by International Gemological Institute (IGI). A laboratory grown diamond is one that has essentially the same chemical, physical and optical properties as a mined diamond...

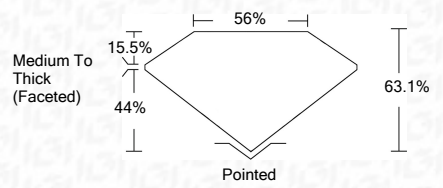


LASERSCRIBE SM

01/07/2021
IGI Report Number LG457073885
Shape and Cutting Style OVAL BRILLIANT
Measurements 9.28 x 6.42 x 4.05 mm
GRADING RESULTS
Carat Weight 1.55 CARAT
Color Grade F
Clarity Grade SI 1

ADDITIONAL GRADING INFORMATION
Polish EXCELLENT
Symmetry EXCELLENT
Fluorescence NONE
Inscription(s) LABGROWN IGI LG457073885

Comments: This Laboratory Grown Diamond was created by Chemical Vapor Deposition (CVD) growth process. Type IIa



01/07/2021
IGI Report No. LG457073885
OVAL BRILLIANT
9.28 x 6.42 x 4.05 mm
1.55 CARAT
F
SI 1
63.1%
56%
Medium To Thick (Faceted)
Pointed
EXCELLENT
EXCELLENT
NONE
LABGROWN IGI LG457073885
Comments: This Laboratory Grown Diamond was created by Chemical Vapor Deposition (CVD) growth process. Type IIa

