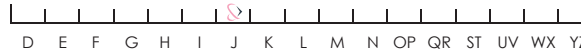




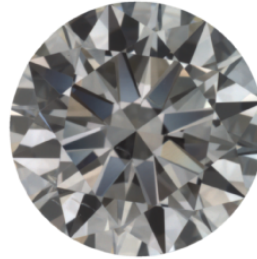
COLOR



* Illustration and color rendering
Color grading scale



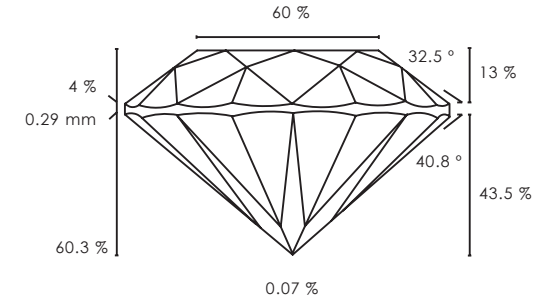
CLARITY



* Actual face up image, Not to scale
Clarity grading scale



CUT & PROPORTIONS

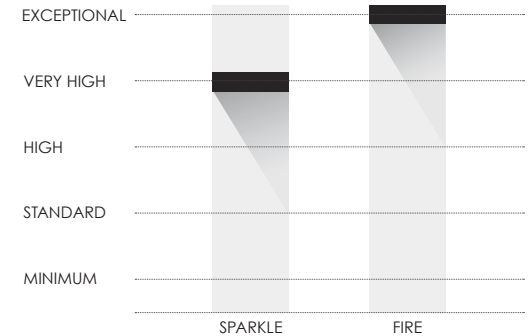


* Actual proportions diagram
Cut grading scale



Date 11-10-2021
Shape Round
Report ID R&F NTRL1PGZZWE
Carat 1.25
Color J
Clarity VS2
Cut EX
Polish VG
Symmetry EX
Fluorescence None
Measurements 6.94 - 6.94 X 4.19 mm
Total Depth 60.3 %
Table 60 %
Crown 13 % - 32.5 °
Star Length 45 %
Girdle 4 % faceted
Pavilion 43.5 % - 40.8 °
Lower Girdle 75 %
Table Inscription R&F NTRL1PGZZWE
 For additional security this diamond has an R&F table inscription.

LIGHT PERFORMANCE RESULTS



The security features in this document include, but are not limited to, our hologram, watermarked paper, microprint lines, barcode, and Quick Response (QR) code, that as a composite, exceed document security industry standards.

Our grading is exclusive to earth-mined natural diamonds that have not gone through any treatment process.



RARE & FOREVER SELECTION PROCESS

The first step in our Rare Selection Process is to prescreen diamonds to reject all those with BGM (Brown, Green, Milky hues within the white diamond). These hues not only devalue the diamond but are difficult to identify when researching diamonds online. Take note that these hues are not disclosed on 99% of the prominent grading reports and laboratories. Rare & Forever is the 1%, setting the standard for maximum brilliance, and bringing transparency and trust to individuals buying diamonds. Next, we utilize unrivaled, A.I. (Artificial Intelligence) diamond grading technology. Traditional human grading varies person to person and lab to lab. Rare & Forever utilizes advanced A.I. technology to eliminate inconsistencies and individual bias to ensure accurate diamond grading. Finally, we screen for brilliance and validate our findings with Light Performance to confirm your diamond is the most brilliant and beautiful diamond available today. Additionally, this Diamond Grading Report details cut, color, clarity and carat weight, plus, other characteristics to verify your purchase. This diamond offers an advanced level of security to ensure your diamond is yours: an R&F laser inscription on the table that matches this diamonds certificate number.

TERMS & CONDITIONS

Through advanced A.I. technology, we are able to supply you with a natural diamond that has gone through rigorous measures to be sourced to comply with the World Diamond Council's Kimberly Process Certification standards. The Kimberly Process is upheld by the United Nations and supported by national governments worldwide and the international diamond industry, to ensure that all diamonds are ethically sourced and conflict free, by the associated countries. The results of this grading report refers only to the diamond identified and were reported using technology and information available to Rare & Forever at the time of inspection. Rare and Forever is not responsible for other entities and persons, as we have given the most accurate description to the best of our ability. This report is not intended to be a guarantee or appraisal of the diamond referred to in this document.

RARE & FOREVER™

www.rareandforever.com



Date	11-10-2021
Shape	Round
Report ID	R&F NTRL1PGZZWE
Carat	1.25
Color	J
Clarity	VS2
Cut	EX
Polish	VG
Symmetry	EX
Fluorescence	None
Measurements	6.94 - 6.94 X 4.19 mm
Total Depth	60.3 %
Table	60 %
Crown	13 % - 32.5 °
Star Length	45 %
Girdle	4 % faceted
Pavilion	43.5 % - 40.8 °
Lower Girdle	75 %
Table Inscription	R&F NTRL1PGZZWE

*For additional security this diamond has an R&F table inscription.

DIAMOND GRADING REPORT

RARE & FOREVER™



RARE & FOREVER
50 West 47th Street
Suite 1907
New York, NY 10036