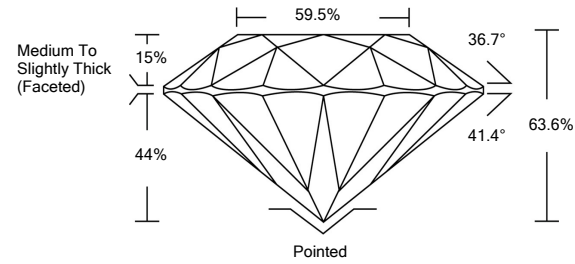




LG457065731

LABORATORY GROWN DIAMOND REPORT

PROPORTIONS



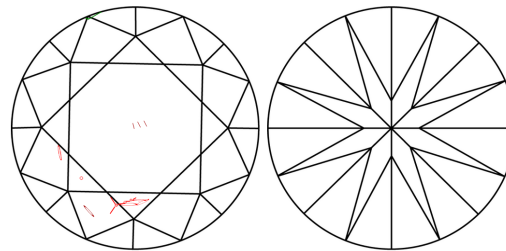
GRADING SCALES

Table with 5 columns for Color (CL, NC, FT, VLT, LT) and Clarity (FL, IF, VVS, VS, SI, I) grading scales.

The laboratory grown diamond described in this Report (Report) has been graded, tested, analyzed, examined and/or inscribed by International Gemological Institute (IGI). A laboratory grown diamond is one that has essentially the same chemical, physical and optical properties as a mined diamond...

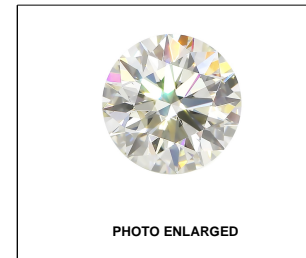
© INTERNATIONAL GEMOLOGICAL INSTITUTE, INC.

CLARITY CHARACTERISTICS



KEY TO SYMBOLS

Red symbols indicate internal characteristics. Green symbols indicate external characteristics.



LABGROWN IGI LG457065731

LASERSCRIBESM

01/07/2021

IGI Report Number LG457065731

Shape and Cutting Style ROUND BRILLIANT

Measurements 6.28 - 6.33 x 4.01 mm

GRADING RESULTS

Carat Weight 1.00 CARAT

Color Grade E

Clarity Grade SI 1

Cut Grade EXCELLENT

ADDITIONAL GRADING INFORMATION

Polish EXCELLENT

Symmetry VERY GOOD

Fluorescence NONE

Inscription(s) LABGROWN IGI LG457065731

Comments: As Grown - No indication of post-growth treatment.

This Laboratory Grown Diamond was created by High Pressure High Temperature (HPHT) growth process. Type II



IGI

Summary table of report details: IGI Report No. LG457065731, ROUND BRILLIANT, 6.28 - 6.33 x 4.01 mm, 1.00 CARAT, E, SI 1, EXCELLENT, 63.6%, 59.5%, Medium To Slightly Thick (Faceted), Pointed, EXCELLENT, VERY GOOD, NONE, LABGROWN IGI LG457065731.

01/07/2021

IGI Report No. LG457065731

ROUND BRILLIANT

6.28 - 6.33 x 4.01 mm

1.00 CARAT

E

SI 1

EXCELLENT

63.6%

59.5%

Medium To Slightly Thick (Faceted)

Pointed

EXCELLENT

VERY GOOD

NONE

LABGROWN IGI LG457065731

Comments: No indication of post-growth treatment. This Laboratory Grown Diamond was created by High Pressure High Temperature (HPHT) growth process. Type II

