



LG455018613

LABORATORY GROWN DIAMOND REPORT

12/17/2020
IGI Report Number LG455018613
Shape and Cutting Style ROUND BRILLIANT
Measurements 6.31 - 6.36 x 4.08 mm

GRADING RESULTS

Carat Weight 1.02 CARAT
Color Grade D
Clarity Grade SI 2
Cut Grade VERY GOOD

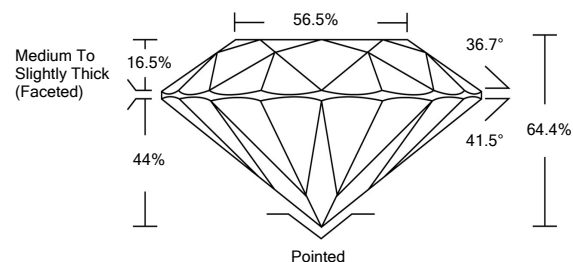
ADDITIONAL GRADING INFORMATION

Polish EXCELLENT
Symmetry EXCELLENT
Fluorescence NONE
Inscription(s) LABGROWN IGI LG455018613

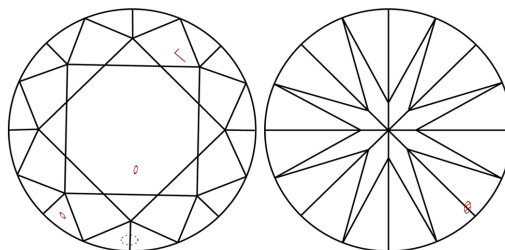
Comments: This Laboratory Grown Diamond was created by High Pressure High Temperature (HPHT) growth process. Type II



PROPORTIONS



CLARITY CHARACTERISTICS



KEY TO SYMBOLS

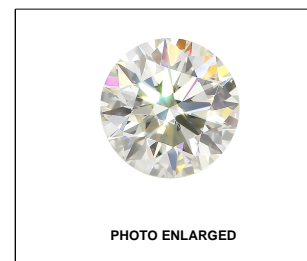
Red symbols indicate internal characteristics.
Green symbols indicate external characteristics.

GRADING SCALES

Table with 5 columns for Color Grading Scale (CL, NC, FT, VLT, LT) and Clarity (10x) Grading Scale (FL, IF, VVS, VS, SI, I).

The laboratory grown diamond described in this Report (Report) has been graded, tested, analyzed, examined and/or inscribed by International Gemological Institute (IGI). A laboratory grown diamond is one that has essentially the same chemical, physical and optical properties as a mined diamond...

© INTERNATIONAL GEMOLOGICAL INSTITUTE, INC.



LABGROWN IGI LG455018613

LASERSCRIBE SM

12/17/2020
IGI Report Number LG455018613
Shape and Cutting Style ROUND BRILLIANT
Measurements 6.31 - 6.36 x 4.08 mm

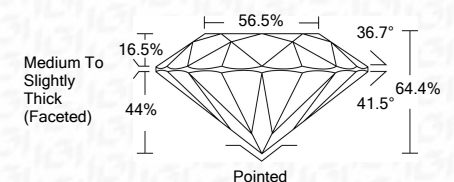
GRADING RESULTS

Carat Weight 1.02 CARAT
Color Grade D
Clarity Grade SI 2
Cut Grade VERY GOOD

ADDITIONAL GRADING INFORMATION

Polish EXCELLENT
Symmetry EXCELLENT
Fluorescence NONE
Inscription(s) LABGROWN IGI LG455018613

Comments: This Laboratory Grown Diamond was created by High Pressure High Temperature (HPHT) growth process. Type II



IGI



12/17/2020
IGI Report No. LG455018613
ROUND BRILLIANT
6.31 - 6.36 x 4.08 mm
Carat Weight 1.02 CARAT
Color Grade D
Clarity Grade SI 2
Depth 64.4%
Table 56.5%
Girdle Medium To Slightly Thick (Faceted)
Culet Pointed
Polish EXCELLENT
Symmetry EXCELLENT
Fluorescence NONE
Inscription(s) LABGROWN IGI LG455018613
Comments: Laboratory Grown Diamond was created by High Pressure High Temperature (HPHT) growth process. Type II