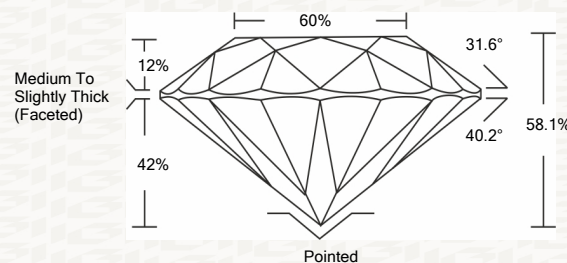




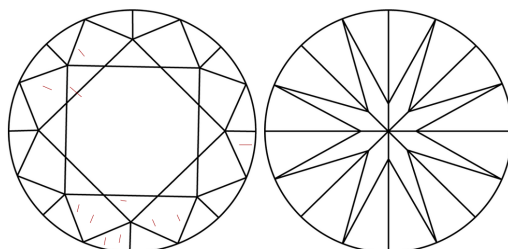
IGI GEMOLOGICAL REPORT

ADDITIONAL INFORMATION

PROPORTIONS



CLARITY CHARACTERISTICS



KEY TO SYMBOLS

Red symbols indicate internal characteristics. Green symbols indicate external characteristics.



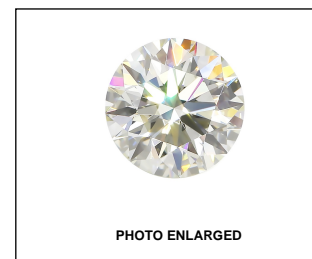
This Report is subject to the terms and conditions

© IGI 2000, edition 2019 all rights reserved.

GRADING SCALES

Table with 2 rows and 5 columns: COLOR GRADING SCALE (CL, NC, FT, VLT, LT) and CLARITY (10x) GRADING SCALE (FL, IF, VVS, VS, SI, I)

The laboratory grown diamond described in this Report (Report) has been graded, tested, analyzed, examined and/or inscribed by International Gemological Institute (I.G.I.)...

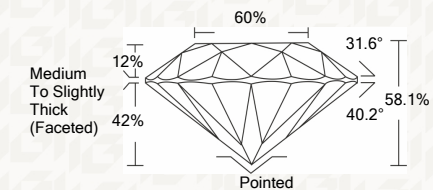


IGI LABORATORY GROWN DIAMOND GRADING REPORT

12/09/2020 IGI Report Number LG451057914 Shape and Cutting Style ROUND BRILLIANT Measurements 6.65 - 6.68 X 3.87 MM

GRADING RESULTS

Carat Weight 1.05 CARAT Color Grade E Clarity Grade VS 2 Cut Grade EXCELLENT



ADDITIONAL GRADING INFORMATION

Polish EXCELLENT Symmetry EXCELLENT Fluorescence NONE Inscription(s) LABGROWN IGI LG451057914

Comments: This Laboratory grown diamond was created by high pressure high temperature process (HPHT).



IGI

12/09/2020 IGI Report No. LG451057914 ROUND BRILLIANT 6.65 - 6.68 X 3.87 MM 1.05 CARAT E VS 2 EXCELLENT 58.1% 60% Medium To Slightly Thick (Faceted) Pointed EXCELLENT EXCELLENT NONE LABGROWN IGI LG451057914

Comments: This Laboratory grown diamond was created by high pressure high temperature process (HPHT).