



IGI GEMOLOGICAL REPORT

IGI LABORATORY GROWN DIAMOND GRADING REPORT

02/25/2021 IGI Report Number LG462174749

Shape and Cutting Style ROUND BRILLIANT

Measurements 7.31 - 7.34 X 4.31 MM

GRADING RESULTS

Carat Weight 1.41 CARAT

Color Grade D

Clarity Grade SI 2

Cut Grade IDEAL

ADDITIONAL GRADING INFORMATION

Polish EXCELLENT

Symmetry EXCELLENT

Fluorescence NONE

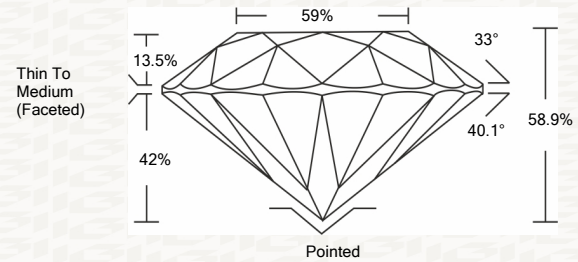
Inscription(s) LABGROWN IGI LG462174749

Comments: As Grown - No indication of post-growth treatment. This Laboratory Grown Diamond was created by High Pressure High Temperature (HPHT) growth process. Type II

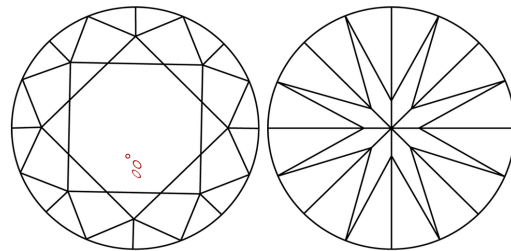


ADDITIONAL INFORMATION

PROPORTIONS



CLARITY CHARACTERISTICS



KEY TO SYMBOLS

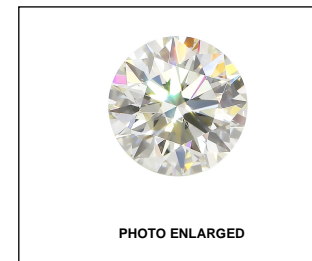
Red symbols indicate internal characteristics. Green symbols indicate external characteristics.

This Report is subject to the terms and conditions © IGI 2000, edition 2019 all rights reserved.

GRADING SCALES

Table with 5 columns: CL, NC, FT, VLT, LT and 5 rows: COLOR GRADING SCALE, CLARITY (10x) GRADING SCALE, and descriptive terms like COLORLESS D-F, NEAR COLORLESS G-J, FAINT K-M, VERY LIGHT N-R, LIGHT S-Z, etc.

The laboratory grown diamond described in this Report (Report) has been graded, tested, analyzed, examined and/or inscribed by International Gemological Institute (IGI). A laboratory grown diamond is one that has essentially the same chemical, physical and optical properties as a mined diamond, with the exception of being grown by man (a manufactured product). IGI employs and utilizes those techniques and equipment currently available to IGI, including, without limitation, 10X magnification, corrected triplet loupe, binocular microscope, master color comparison stones, non-contact optical measuring device, Diamond Sure™, Diamond View™, Spectrophotometer and such other instruments and/or processes as deemed appropriate by IGI. This Report includes advanced security features. A duly accredited gemologist or jeweler can advise you with respect to the importance of and interrelationship between cut, color, clarity and carat weight. THIS REPORT IS NEITHER A GUARANTEE, VALUATION, NOR APPRAISAL OF THE GEMSTONE DESCRIBED HEREIN. PLEASE REVIEW THE LIMITATIONS AND RESTRICTIONS SET FORTH ONLINE FOR ADDITIONAL INFORMATION, IMPORTANT LIMITATIONS AND DISCLAIMERS, PLEASE GO TO WWW.IGI.ORG OR CALL 1-888-BUY-IGI. © INTERNATIONAL GEMOLOGICAL INSTITUTE, INC.



LASERSCRIBE SM



IGI LABORATORY GROWN DIAMOND GRADING REPORT

02/25/2021 IGI Report Number LG462174749

Shape and Cutting Style ROUND BRILLIANT

Measurements 7.31 - 7.34 X 4.31 MM

GRADING RESULTS

Carat Weight 1.41 CARAT

Color Grade D

Clarity Grade SI 2

Cut Grade IDEAL

ADDITIONAL GRADING INFORMATION

Polish EXCELLENT

Symmetry EXCELLENT

Fluorescence NONE

Inscription(s) LABGROWN IGI LG462174749

Comments: As Grown - No indication of post-growth treatment. This Laboratory Grown Diamond was created by High Pressure High Temperature (HPHT) growth process. Type II



IGI



02/25/2021 IGI Report No. LG462174749 ROUND BRILLIANT 7.31 - 7.34 X 4.31 MM 1.41 CARAT D SI 2 IDEAL 89.9% 58% Thin To Medium (Faceted) Polished EXCELLENT EXCELLENT NONE LABGROWN IGI LG462174749 Comments: As Grown - No indication of post-growth treatment. This Laboratory Grown Diamond was created by High Pressure High Temperature (HPHT) growth process. Type II