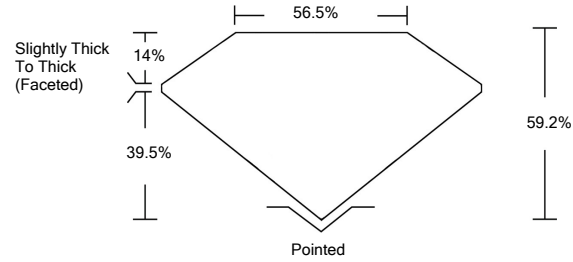




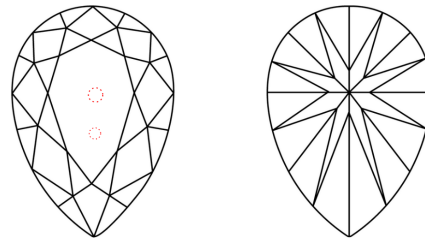
LG457063185

LABORATORY GROWN DIAMOND REPORT

PROPORTIONS



CLARITY CHARACTERISTICS



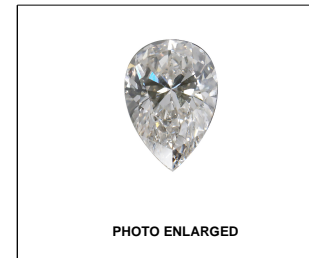
KEY TO SYMBOLS

Red symbols indicate internal characteristics. Green symbols indicate external characteristics.

GRADING SCALES

Table with 5 columns: COLOR GRADING SCALE (CL, NC, FT, VLT, LT), CLARITY (10x) GRADING SCALE (FL, IF, VVS, VS, SI, I), and corresponding descriptions.

The laboratory grown diamond described in this Report (Report) has been graded, tested, analyzed, examined and/or inscribed by International Gemological Institute (IGI). A laboratory grown diamond is one that has essentially the same chemical, physical and optical properties as a mined diamond...



LASERSCRIBE<sup>SM</sup>

01/04/2021

IGI Report Number LG457063185

Shape and Cutting Style PEAR BRILLIANT

Measurements 10.11 x 6.23 x 3.69 mm

GRADING RESULTS

Carat Weight 1.41 CARAT

Color Grade F

Clarity Grade VS 2

ADDITIONAL GRADING INFORMATION

Polish VERY GOOD

Symmetry EXCELLENT

Fluorescence NONE

Inscription(s) LABGROWN IGI LG457063185

Comments: As Grown - No indication of post-growth treatment.

This Laboratory Grown Diamond was created by Chemical Vapor Deposition (CVD) growth process. Type IIa



IGI

Summary table of report details: 01/04/2021, IGI Report No. LG457063185, PEAR BRILLIANT, 10.11 x 6.23 x 3.69 mm, 1.41 CARAT, F, VS 2, 56.5%, 39.5%, Slightly Thick To Thick (Faceted), Pointed, VERY GOOD, EXCELLENT, NONE, LABGROWN IGI LG457063185.

As Grown - No indication of post-growth treatment. This Laboratory Grown Diamond was created by Chemical Vapor Deposition (CVD) growth process. Type IIa

