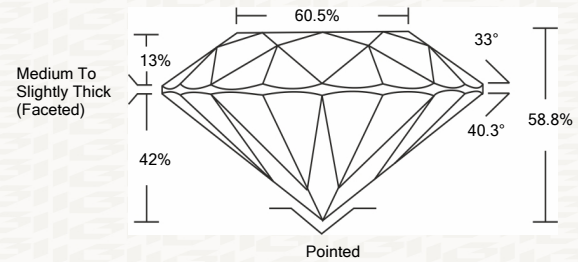




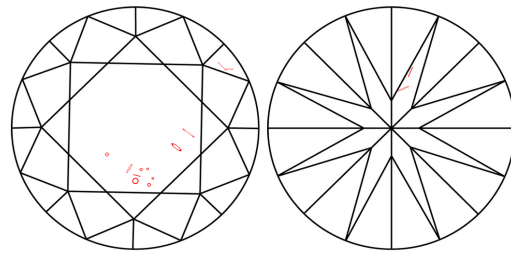
IGI GEMOLOGICAL REPORT

ADDITIONAL INFORMATION

PROPORTIONS



CLARITY CHARACTERISTICS



KEY TO SYMBOLS

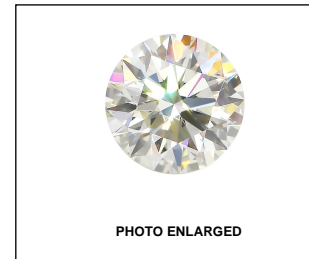
Red symbols indicate internal characteristics. Green symbols indicate external characteristics.

This Report is subject to the terms and conditions © IGI 2000, edition 2019 all rights reserved.

GRADING SCALES

Table with 2 rows and 5 columns showing grading scales for Color (CL), Near Colorless (NC), Faint (FT), Very Light (VLT), and Light (LT) for both Color and Clarity.

The laboratory grown diamond described in this Report (Report) has been graded, tested, analyzed, examined and/or inscribed by International Gemological Institute (IGI). A laboratory grown diamond is one that has essentially the same chemical, physical and optical properties as a mined diamond...

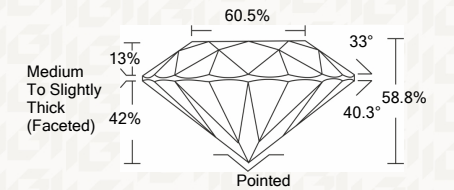


LASERSCRIBE SM



IGI LABORATORY GROWN DIAMOND GRADING REPORT

11/19/2020 IGI Report Number LG451053911 Shape and Cutting Style ROUND BRILLIANT Measurements 6.47 - 6.53 X 3.82 MM GRADING RESULTS Carat Weight 1.00 CARAT Color Grade E Clarity Grade SI 2 Cut Grade EXCELLENT



ADDITIONAL GRADING INFORMATION

Polish EXCELLENT Symmetry EXCELLENT Fluorescence NONE Inscription(s) LABGROWN IGI LG451053911

Comments: This Laboratory grown diamond was created by high pressure high temperature process (HPHT). Type II



11/19/2020 IGI Report No. LG451053911 ROUND BRILLIANT 6.47 - 6.53 X 3.82 MM 1.00 CARAT E SI 2 EXCELLENT 58.8% 60.5% Medium To Slightly Thick (Faceted) Pointed EXCELLENT EXCELLENT NONE LABGROWN IGI LG451053911 Comments: This Laboratory grown diamond was created by high pressure high temperature process (HPHT) Type II

THE DOCUMENT WAS PRODUCED WITH THE FOLLOWING SECURITY MEASURES: SPECIAL DOCUMENT PAPER, INK SCREENS, WATERMARK BACKGROUND DESIGNS HOLOGRAM AND OTHER SECURITY FEATURES NOT LISTED AND DO EXCEED DOCUMENT SECURITY INDUSTRY GUIDELINES