



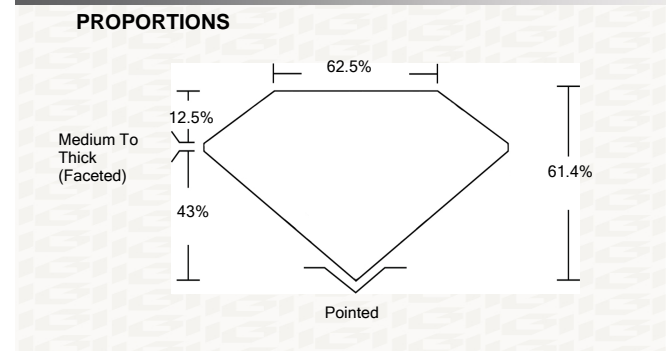
IGI GEMOLOGICAL REPORT IGI LABORATORY GROWN DIAMOND GRADING REPORT

12/15/2020 IGI Report Number LG451058518 Shape and Cutting Style OVAL BRILLIANT Measurements 7.90 X 5.81 X 3.57 MM GRADING RESULTS Carat Weight 1.02 CARAT Color Grade E Clarity Grade SI 1

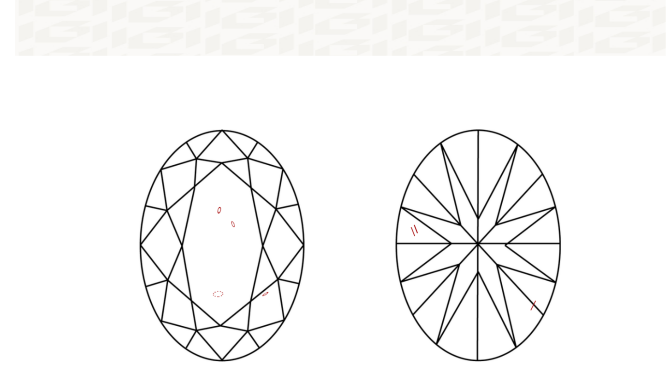
ADDITIONAL GRADING INFORMATION Polish EXCELLENT Symmetry VERY GOOD Fluorescence NONE Inscription(s) LABGROWN IGI LG451058518

Comments: This Laboratory grown diamond was created by high pressure high temperature process (HPHT).

ADDITIONAL INFORMATION



CLARITY CHARACTERISTICS

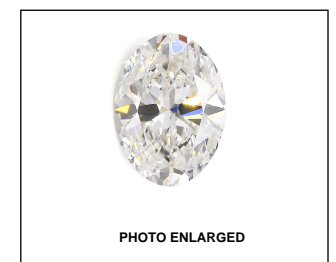


KEY TO SYMBOLS Red symbols indicate internal characteristics. Green symbols indicate external characteristics.

This Report is subject to the terms and conditions © IGI 2000, edition 2019 all rights reserved.

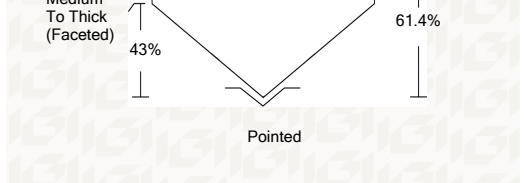
Table with 5 columns for Color Grading Scale (CL, NC, FT, VLT, LT) and Clarity (10x) Grading Scale (FL, IF, VVS, VS, SI, I).

The laboratory grown diamond described in this Report (Report) has been graded, tested, analyzed, examined and/or inscribed by International Gemological Institute (IGI). A laboratory grown diamond is one that has essentially the same chemical, physical and optical properties as a mined diamond...



IGI LABORATORY GROWN DIAMOND GRADING REPORT

12/15/2020 IGI Report Number LG451058518 Shape and Cutting Style OVAL BRILLIANT Measurements 7.90 X 5.81 X 3.57 MM GRADING RESULTS Carat Weight 1.02 CARAT Color Grade E Clarity Grade SI 1



ADDITIONAL GRADING INFORMATION Polish EXCELLENT Symmetry VERY GOOD Fluorescence NONE Inscription(s) LABGROWN IGI LG451058518

Comments: This Laboratory grown diamond was created by high pressure high temperature process (HPHT).



Summary of report details including report number, measurements, grading results, and contact information.