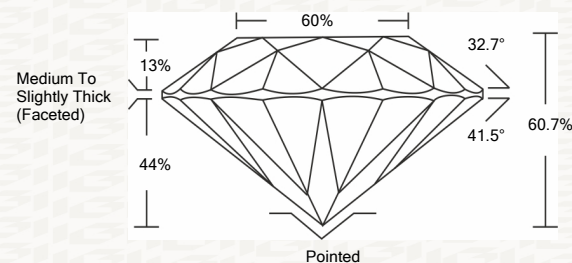




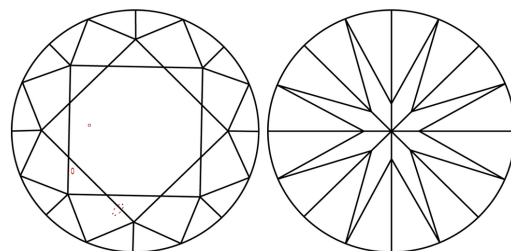
IGI GEMOLOGICAL REPORT

ADDITIONAL INFORMATION

PROPORTIONS



CLARITY CHARACTERISTICS



KEY TO SYMBOLS

Red symbols indicate internal characteristics. Green symbols indicate external characteristics.

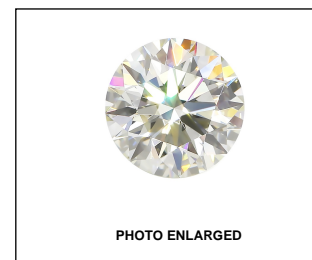
This Report is subject to the terms and conditions

© IGI 2000, edition 2019 all rights reserved.

GRADING SCALES

Table with 2 rows and 5 columns showing grading scales for Color and Clarity.

The laboratory grown diamond described in this Report (Report) has been graded, tested, analyzed, examined and/or inscribed by International Gemological Institute (I.G.I.).



LASERSCRIBE SM



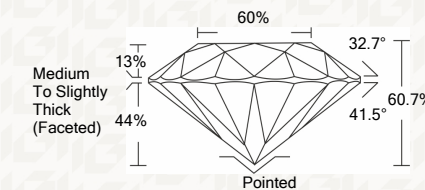
THE DOCUMENT WAS PRODUCED THE FOLLOWING SECURITY MEASURES: SPECIAL DOCUMENT PROTECTION, WATERMARK, BACKGROUND DESIGNS HOLOGRAM AND OTHER SECURITY FEATURES NOT LISTED AND DO NOT VIOLATE ANY INDUSTRY DUBLINES

IGI LABORATORY GROWN DIAMOND GRADING REPORT

02/19/2020 IGI Report Number LG407930488 Shape and Cutting Style ROUND BRILLIANT Measurements 6.65 - 6.67 X 4.04 MM

GRADING RESULTS

Carat Weight 1.09 CARAT Color Grade H Clarity Grade VS 2 Cut Grade EXCELLENT



ADDITIONAL GRADING INFORMATION

Polish EXCELLENT Symmetry EXCELLENT Fluorescence NONE Inscription(s) LABGROWN IGI LG407930488

Comments: This Laboratory grown diamond was created by chemical vapor deposition process (CVD) Type IIa



IGI



02/19/2020 IGI Report No. LG407930488 ROUND BRILLIANT 6.65 - 6.67 X 4.04 MM 1.09 CARAT H VS 2 EXCELLENT 60.7% 60% Medium To Slightly Thick (Faceted) Pointed EXCELLENT EXCELLENT NONE LABGROWN IGI LG407930488 Comments: This Laboratory grown diamond was created by chemical vapor deposition process (CVD) Type IIa