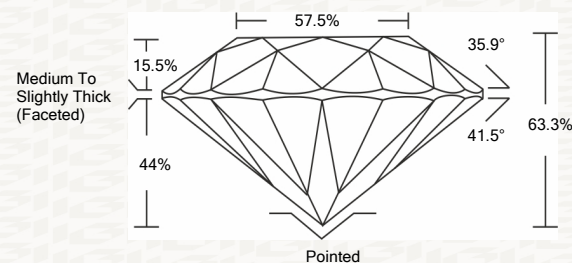




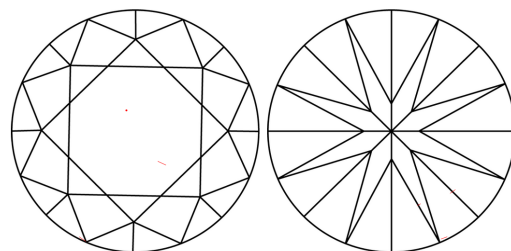
IGI GEMOLOGICAL REPORT

ADDITIONAL INFORMATION

PROPORTIONS



CLARITY CHARACTERISTICS



KEY TO SYMBOLS

Red symbols indicate internal characteristics. Green symbols indicate external characteristics.

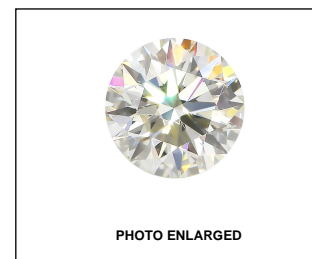
This Report is subject to the terms and conditions

© IGI 2000, edition 2019 all rights reserved.

GRADING SCALES

Table with 2 rows and 5 columns showing grading scales for Color and Clarity.

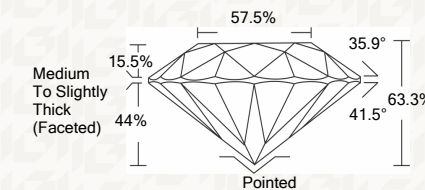
The laboratory grown diamond described in this Report (Report) has been graded, tested, analyzed, examined and/or inscribed by International Gemological Institute (I.G.I.).



THE DOCUMENT WAS PRODUCED THE FOLLOWING SECURITY MEASURES: SPECIAL DOCUMENT BACKGROUND DESIGNS HOLOGRAM AND OTHER SECURITY FEATURES NOT LISTED AND DO NOT VIOLATE TRADEMARK OR PATENT RIGHTS OR INDUSTRY DUBLINES

IGI LABORATORY GROWN DIAMOND GRADING REPORT

05/18/2020 IGI Report Number LG407941768 Shape and Cutting Style ROUND BRILLIANT Measurements 7.57 - 7.60 X 4.80 MM GRADING RESULTS Carat Weight 1.70 CARAT Color Grade I Clarity Grade VS 2 Cut Grade EXCELLENT



ADDITIONAL GRADING INFORMATION

Polish EXCELLENT Symmetry EXCELLENT Fluorescence NONE Inscription(s) LABGROWN IGI LG407941768

Comments: This Laboratory grown diamond was created by chemical vapor deposition process (CVD) Type IIa



IGI



05/18/2020 IGI Report No. LG407941768 ROUND BRILLIANT 7.57 - 7.60 X 4.80 MM Carat Weight 1.70 CARAT Color Grade I Clarity Grade VS 2 Cut Grade EXCELLENT Depth 63.3% Table 57.5% Girdle Medium To Slightly Thick (Faceted) Culet Pointed Polish EXCELLENT Symmetry EXCELLENT Fluorescence NONE Inscription(s) LABGROWN IGI LG407941768 Comments: This Laboratory grown diamond was created by chemical vapor deposition process (CVD) Type IIa